

Virginia Currer Marine Ltd

Inland Waterway Specialists

Delta House Delta Way Thorpe Egham Surrey TW20 8RX

Tel: 01784 432111

Fax: 01784 432777

Mob: 07860 480079

Email: jc@vcmarine.co.uk

Web: www.vcmarine.co.uk

BANNANAFISH

£32,000

General.

Builder: **Starcraft**

Type: Traditional

Fitted: Not known

Year: 1989

Length: 70ft (21.2m)

Beam: 6ft 10ins (2.1m) *Draught:* c1ft 9in (.6m)

Lying: Croxley Green, Grand Union South

BW no: 46079

CIN No: N/a

BSC to: June 2012

History

The vessel was sold by ourselves to the current owner in 1997. The hull was last out of the water in August 2009 at which time the hull was surveyed for insurance problems and no significant problems were found. The hull was blacked and new anodes were fitted at the same time.

Hull & Exterior.

Material / build: All steel. Thicknesses: 12 / 6 / 4mm



Exterior: Black bitumen painted hull to rubbing band. Purple from rubbing band through side decks and cabin sides. Roof in golden yellow.

Windows: Black anodised combination of top hopper and sliding opening, 8 to port and 7 to starboard with additional opening side doors to starboard.

Forward well: Rope fender. Steel cants. 'T' stud. Self draining steel well deck with inspection hatch to integral water tank below. Two central half glazed timber lined steel doors to accommodation, with fixed glazed windows to either side. Storage locker below foredeck..

Roof: Oval handrails. Raised roof line over saloon with additional glazing. Flue for solid fuel stove and Paloma. 5 ventilators. Hinged hatch over side doors. Long sliding hatch over access aft.

Aft deck: Traditional style. Rope fender, 2 mooring dollies, steel cants, diesel filler. Tiller steering. Self draining deck. Two central timber lined steel doors to engine space.

Mechanical & Electrical.

Engine: Ford 4D 56hp Gearbox: Parsons Hydraulic Cooling: Skin tank
Calorifier feed: No

Bowthruster: No

Weed hatch: Quick release Stern gland greaser: Remote

Batteries: 12V Domestic: 1 Engine: 1
240v: Yes Inverter: No Charger: No Generator: No

Interior.

Lining - floor to gunwale: Ochre painted panelling

Lining - gunwale to ceiling: As above

Lining - ceiling: Cream painted panelling

Bulkheads: As cabin sides

Flooring: Combination of cork tiles, timber effect vinyl, timber laminate and carpet

Cabin heating: Morso solid fuel stove with back boiler gravity feeding radiator

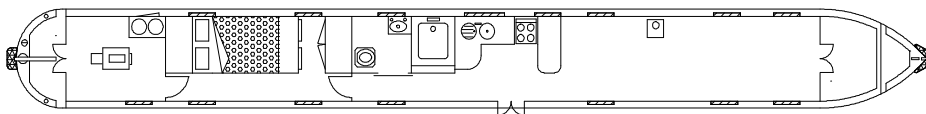
Insulation: Polystyrene

Water heating: Paloma gas fired

Headroom: 6ft 4in

ACCOMMODATION (From aft)

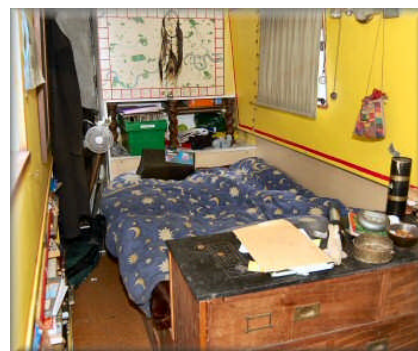
Cabin Arrangement: Engine space / double cabin / Bathroom / Galley / Saloon



Berth arrangement: 2 berth - fixed double in own cabin

Cabin 1: Engine space. The engine is enclosed with timber panels. Door to starboard leads forward into ...

Cabin 2: Double cabin. Against the aft bulkhead is a full height section of storage. The double bed is lengthways to port with foam mattress c. 6ft 6in x 4ft. Pull out storage below double. At the foot of the bed is a set of drawers. Against the forward bulkhead is a full height cupboard unit with hanging rail. To starboard is a passageway with under gunnel storage cupboards. Sliding door to port leads into

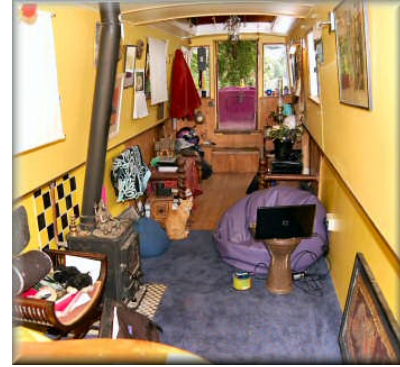


Cabin 3: Bathroom. Large square 'feature' bath with hand held shower over. Chemical toilet. Paloma gas water heater on bulkhead. White china hand basin. Bathroom cabinet. Passageway continues forward into ...



Cabin 4: Galley. The galley is to port and comprises varnished wood block work surface over timber cupboards below. Separate inset round stainless steel sink and drainer. Full sized free standing New World 4 burner cooker with grill and oven below. Further section of work surface extends sideways at the forward end. The galley is open plan to ...

Cabin 5: Saloon. The saloon is designed to take free standing furniture. The Morso solid fuel stove is mounted on a tiled hearth with tiled rear centrally to port. Step up to forward well.



This boat has not been cleared and personal possessions will be removed prior to sale.

GENERAL

Sale type: Private

Viewing: By arrangement.

PLEASE NOTE

In this case we are acting as Brokers only.

Whilst every care has been taken in their preparation, the correctness of these particulars is not guaranteed.

The particulars are intended only as a guide and they do not constitute a term of any contract.

A prospective buyer is strongly advised to check the particulars and where appropriate at his own expense to employ a qualified Marine Surveyor to carry out a survey and / or to have an engine trial conducted which if conducted by us shall not imply any liability for such engine on our part.

The Vendor is not selling in the course of a business.

All sales subject to contract. No guarantee is given or implied as to the condition or legal title.

No appliances or systems have been tested. All measurements stated are approximate.