

# Virginia Currer Marine Ltd

## Inland Waterway Specialists

Delta House Delta Way Thorpe Egham Surrey TW20 8RX

Tel: 01784 432111

Fax: 01784 432777

Mob: 07860 480079

Email: [jc@vcmarine.co.uk](mailto:jc@vcmarine.co.uk)

Web: [www.vcmarine.co.uk](http://www.vcmarine.co.uk)

## DEBRIS [DRAFT]

## £30,000

### General.

**Builder:** Ex BW Working Boat                      **Type:** Semi traditional stern  
**Fitted:** Converted by Bluewater Boats Ltd (steelwork) and David Jones (interior fit)  
**Year:** Believed 1987  
**Length:** 40ft (12.2m)                                      **Beam:** 6ft 10ins (2.1m)    **Draught:** c1ft 9in (.6m)  
**Lying:** River Severn, Gloucestershire  
**BW no:** 518671    **CIN No:** N/a    **BSC to:** Yes

### History

The vessel was originally a British Waterways workboat. Having been sold into private ownership the hull has been overplated with a 10mm baseplate 6mm side plates to the waterline. The superstructure has been totally renewed in steel. The interior has been completely refitted by David Jones to a high standard making extensive use of hardwoods. The large flat foredeck still allows the vessel to be 'worked', whilst offering comfortable accommodation within.

### Hull & Exterior.

**Material / build:** All steel.    Thicknesses: 10 / 6 / 4mm



**Exterior:** Black 2 part epoxy tressed hull. Side decks, cabin sides and roof in grey, with non slip finish to side decks and roof. Black signwritten panels with white coachlines on cabin sides.

**Windows:** Black anodised aluminium top hopper opening portholes, 3 to port and two to starboard. Additional pair of opening side doors to starboard.

**Forward well:** Extended flush 'tug' style foredeck with two mooring bollards. Flat bow. Two central timber lined steel doors to accommodation.

**Roof:** Integral steel handrails. Centre eye. Large sliding hatches over accesses aft and forward. Two tunnel lights. Omni directional TV aerial.

**Aft deck:** Semi traditional style. Rope fender. 2 mooring dollies, steel cants, diesel filler. Tiller steering. Self draining deck with inset hinged hatch giving access to weed hatch. Within the semi trad section is a timber topped seat to port incorporating a gas locker and diesel tank for central heating. Two central timber lined steel doors to accommodation.

Debris continued.....

---

### **Mechanical & Electrical.**

Engine: JCB 4cyl 95hp      Gearbox: Hydraulic      Cooling: Indirect raw water  
Calorifier feed: Yes      Bowthruster: No  
Weed hatch: Quick release      Stern gland greaser: Remote  
Bilge pump: 12v  
Batteries: 12v      Domestic: 3      Engine: 1  
240v: Yes      Inverter: Sterling 1800w      Charger: Sterling automatic  
Generator: No

---

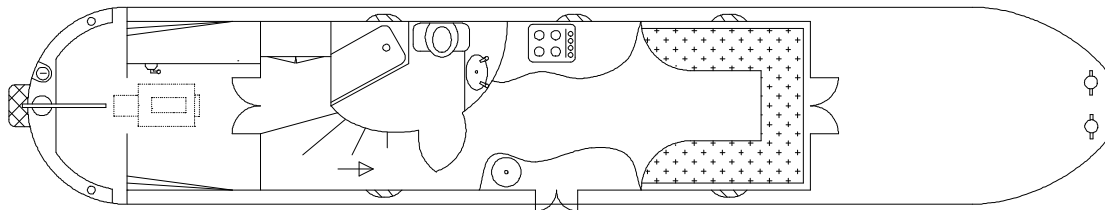
### **Interior.**

Lining - floor to gunwale: Solid close boarded oak  
Lining - gunwale to ceiling: Narrow routed tongue and groove hardwood  
Lining - ceiling: As hull sides  
Bulkheads: As hull sides  
  
Flooring: Solid close boarded hardwood  
Lighting: 12v halogen  
  
Cabin heating: Eberspacher diesel  
Insulation: Sprayfoam  
Water heating: Calorifier from engine, Eberspacher and 240v immersion heater  
  
Headroom: 6ft 4in

---

### **ACCOMMODATION** (From aft)

Cabin Arrangement: Bathroom / Galley / Saloon



Berth arrangement: 2 berth - convertible double in saloon

Cabin 1: Step in from aft deck. Curving solid timber steps to starboard. Feature curved door within curved bulkhead opens into bathroom. 6ft antique style bath in white, with solid oak surround. Thetford electric flush cassette toilet. Oval white china hand basin inset into hardwood timber unit with open storage below. Forward into.....



Debris continued.....



*Cabin 2: Galley.* The galley is organised on both sides of the craft. Contoured solid timber work tops with cupboards incorporating curved doors below. Round stainless steel inset sink unit with mono tap. To starboard is an inset Belling 4 burner gas hob in stainless steel with matching Belling grill and oven below. The galley is open plan to.....

*Cabin 3: Saloon.* The saloon has 'U' shaped upholstered seating to the sides and front, and an antique 'clock' on Desmo style leg as a central table. The seating can be reconfigured to provide a double berth. For 'day' use the front part of the seating can be replaced with steps allowing easy through access to the extended foredeck.



This boat has been cleared and will be sold as viewed.

---

#### **GENERAL**

*Sale type:* Private

*Viewing:* By arrangement.

#### **PLEASE NOTE**

*In this case we are acting as Brokers only.*

*Whilst every care has been taken in their preparation, the correctness of these particulars is not guaranteed.*

*The particulars are intended only as a guide and they do not constitute a term of any contract.*

*A prospective buyer is strongly advised to check the particulars and where appropriate at his own expense to employ a qualified Marine Surveyor to carry out a survey and / or to have an engine trial conducted which if conducted by us shall not imply any liability for such engine on our part.*

*The Vendor is not selling in the course of a business.*

*All sales subject to contract. No guarantee is given or implied as to the condition or legal title.*

*No appliances or systems have been tested. All measurements stated are approximate.*

© Virginia Currer Marine Ltd 2011

Accredited members of

