

Virginia Currer Marine Ltd

Inland Waterway Specialists

Delta House Delta Way Thorpe Egham Surrey TW20 8RX

Tel: 01784 432111

Fax: 01784 432777

Mob: 07860 480079

Email: jc@vcmarine.co.uk

Web: www.vcmarine.co.uk

JUNO

£29,000 (price reduced)

General.

Builder: Harland & Wolff Small Woolwich **Type:** Traditional Stern
Fitted: Converted in 1980 **Year:** 1935
Length: 70ft (21.3m) **Beam:** 7ft (2.14m) **Draught:** c1ft 9in (.6m)
Lying: Uxbridge, Grand Union Canal
BW no: 502384 **CIN No:** N/a **BSC to:** 17/112012

History

The vessel is listed on the Historic Boat register. She was originally a butty and was believed to have been used on the 'Bourneville run'. She was converted to a 'motor' in 1980 by Malcolm Braine. The interior was refitted in 1997. The vessel was last surveyed in 2007, at which time one bottom plank was replaced by Jem Bates.

Hull & Exterior.

Material / build: Rivetted iron hull sides, and original elm plank bottom. The superstructure is a fully insulated timber and canvas imitation of a clothed over cargo hold. The aft part of the vessel comprising stern, boatman's cabin, engine room and galley is in timber.



Exterior: Black bitumen painted hull to timber capped side decks. Forward superstructure finished in canvas. Rear superstructure in blue with red panels and cream coachline. 'Old fashioned red' roof. Cream and red flashing on stern. Red flashing on bow.

Windows: Glazed windows inset into forward clothed over superstructure. Fixed portholes fitted aft.

Forward well: Classic 'Small Woolwich' bow. Steel cants. 'T' stud. Headlight on upstand. Hatch over storage locker incorporating water tank. Timber cratch forming forward bulkhead of full height 'washroom'. Large forward well with gas locker containing 2 x 13kg gas bottles. Timber door to main accommodation.

Juno continued

Roof: Canvas over forward well . Imitation clothed over hold with GUCC logo each side. The aft section has timber handrails, sliding hatches over engine room side doors, pigeon box over engine room, 4 brass mushroom vents, roof mounted engine oil pressure gauge, flue for range, sliding hatch over access aft.

Aft deck: Traditional style. Rope fender, 2 mooring dollies, steel cants, diesel filler. Tiller steering. Self draining deck. Two central timber doors to accommodation.

Mechanical & Electrical.

Engine: Lister HB3M **Gearbox:** Lister Blackstone manual
Control: Speed wheel and gear wheel **Cooling:** Air
Calorifier feed: No
Bowthruster: No
Weed hatch: Quick release **Stern gland greaser:** Remote
Bilge pump: 12v
Batteries: 12v **Domestic:** 2 **Engine:** 1
240v: Yes **Inverter:** No **Charger:** 3 x fully automatic
Generator: No

Interior.

Lining - floor to gunwale: Boatman's cabin conventionally finished in scumble and traditional canal motifs. Engine room fully painted. Main accommodation – gloss varnished panelling.

Lining - gunwale to ceiling: Dark mahogany like gloss varnished panelling.

Flooring: Dark solid close boarded timber throughout.

Lighting: Combination of 12v surface mounted tungsten and additional 240v units.

Cabin heating: Morso solid fuel stove in saloon and solid fuel range in Boatman's cabin.

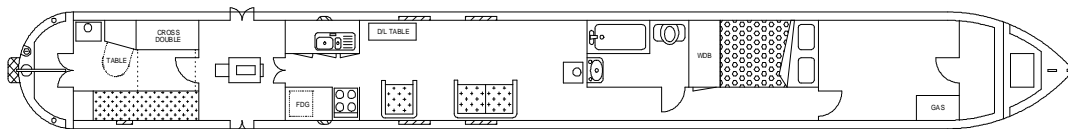
Insulation: Polystyrene and rockwool.

Water heating: Paloma gas

Headroom: 6ft 10in in centre

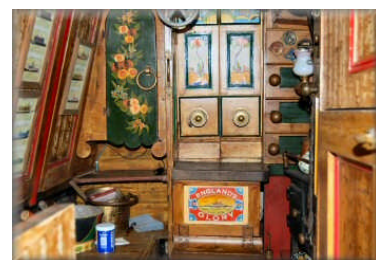
ACCOMMODATION (From aft)

Cabin Arrangement: Boatman's cabin / Engine room / Galley / Saloon / Bathroom / Double cabin / Washroom.



Berth arrangement: 4 berth - fixed double in own cabin and convertible cross double in Boatman's cabin.

Cabin 1: Boatman's cabin. Very conventional with solid fuel range, drop table, crumb drawer, drop cross double berth and seating opposite, all finished in traditional scumble and 'canalia' decoration. Central door leads forward into ...



Juno continued

Cabin 2: Engine room. The engine room is lined above gunnel and painted below. Against the forward bulkhead are a pair of traditional triangular fuel tanks. The engine mounted centrally and exposed. Top exhaust. Opening side doors to both sides. Central doors lead forward into ...



closeable with a curtain leads forward into ...

Cabin 3: Galley. Organised on both sides of the craft with pale granite effect laminate work surface over beech effect cupboards and drawers below. To port is an inset one and a half bowl stainless steel sink and drainer unit. Paloma gas water heater on bulkhead. To starboard is a matching section of work surface. New World full size 4 burner cooker with grill and oven and below work surface is a Shoreline 12v refrigerator. Microwave oven at high level. Doorway

Cabin 4: Saloon. Designed to take free standing furniture currently with two seat sofa in black, single matching armchair and flap up side table. The Morso solid fuel stove is mounted on a stone timber trimmed hearth centrally against the forward bulkhead. Passageway to starboard continues forward with door off into ...



Cabin 5: Bathroom. ¾ sized bath in white with antique style chrome taps and hand held shower attachment. White china hand basin partially inset over storage cupboard. Thetford cassette toilet. Mirror on bulkhead. Passageway continues forward into ...



Cabin 6: Double cabin. The double berth is lengthways to port with mattress c. 6ft x 4ft. Large fitted wardrobe. Timber to starboard door leads out to spacious forward well.

Cabin 7: Washroom. At the forward end forward well is a full height structure housing a 240v washing machine and tumble drier.

This boat has not been cleared and personal items will be removed prior to sale.

GENERAL

Berth transferable: No *Sale type:* Private *Viewing:* By appointment.

PLEASE NOTE

In this case we are acting as Brokers only.

Whilst every care has been taken in their preparation, the correctness of these particulars is not guaranteed.

The particulars are intended only as a guide and they do not constitute a term of any contract.

A prospective buyer is strongly advised to check the particulars and where appropriate at his own expense to employ a qualified Marine Surveyor to carry out a survey and / or to have an engine trial conducted which if conducted by us shall not imply any liability for such engine on our part.

All sales subject to contract. No guarantee is given or implied as to the condition or legal title.

No appliances or systems have been tested. All measurements stated are approximate.

The Vendor is not selling in the course of a business.

© Virginia Currer Marine Ltd 2010