

Virginia Currer Marine Ltd

Inland Waterway Specialists

Delta House Delta Way Thorpe Egham Surrey TW20 8RX

Tel: 01784 432111

Fax: 01784 432777

Mob: 07860 480079

Email: jc@vcmarine.co.uk

Web: www.vcmarine.co.uk

JUST PERFICK

£45,000

General.

Builder: Liverpool Boat Company *Type:* Semi Traditional
Fitted: Current owner *Year:* 1999
Length: 60ft (18.3m) *Beam:* 6ft 10ins (2.1m) *Draught:* c1ft 9in (.6m)
Lying: River Thames, near Staines
BW no: Not registered *CIN No:* GB-LBC00409I998 *BSC to:* 01/06/2013

History

Although the second owners, the purchase was a few months after build. They have fitted her internally, and have owned her since then.

Hull & Exterior.

Material / build: All steel. *Thicknesses:* 10 / 6 / 4mm



Exterior: Black bitumen painted hull to rubbing band. Mid green from rubbing band through side decks, cabin sides and roof. Full length red panel with gold coachling. The name is signwritten on the cabin sides.

Windows: Brass anodised aluminium top hopper opening, 3 each side and 2 further pot holes aft. Opening side doors to starboard.

Forward well: Rope fender. Steel cants. 'T' stud. Gas locker containing 2 x 13kg gas bottles. Demountable glazed cratch providing full standing headroom. Overall maroon cover with zipped side doors. Timber seat across forward part of well and timber topped seat / locker to starboard. Self draining steel well deck with inspection hatch to integral water tank below. Two central half glazed varnished timber doors to accommodation.

Roof: Integral steel handrails. 2 brass Houdini style skylights. 2 brass mushroom vents and further ventilator.

Aft deck: Semi traditional style. Rope fender, 2 mooring dollies, steel cants, diesel filler. Tiller steering. Timber rail around stern. Hinged hatch over access to weed hatch. Two steel doors to semi traditional section. To port is a steel constructed locker / seat. Recessed steps to starboard down to timber door to accommodation.

Just Perfick continued

Mechanical & Electrical.

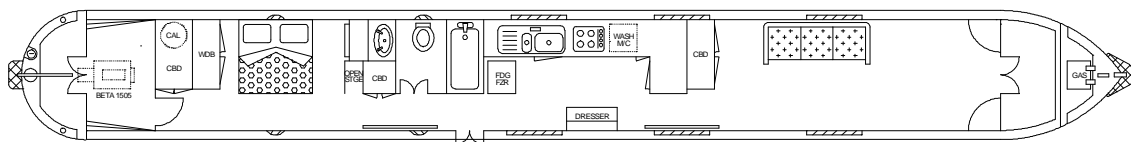
Engine: Beta Kubota BV1505 38hp twin alternator Gearbox: PRM 120
Cooling: Skin tank Calorifier feed: Yes Hours: 2175
Bowthruster: No Weed hatch: Quick release Stern gland greaser: Remote
Bilge pump: 12v
Batteries: 12v Domestic: 3 Engine: 1
240v: Yes Inverter: Mastervolt Combi 3500w / 100amp inverter charger
Generator: No

Interior.

Lining - floor to gunwale: Varnished oak faced panelling with pale timber trim
Lining - gunwale to ceiling: Pale matt lilac painted with pale timber trim
Lining - ceiling: Satin varnished tongue and groove pine
Flooring: Green carpeting aft , timber laminate to galley and saloon. Granite effect vinyl tile to bathroom.
Lighting:
Cabin heating: Webasto diesel central heating
Insulation: Sprayfoam
Water heating: Calorifier from engine, Webasto and 240v immersion
Headroom: 6ft 5in

ACCOMMODATION (From aft)

Cabin Arrangement: Double cabin / Bathroom / Galley / Saloon



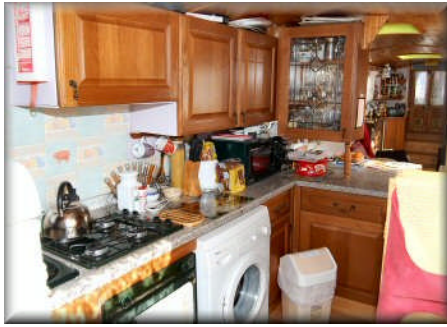
Berth arrangement: 4 berth - fixed double in own cabin and convertible double in saloon

Cabin 1: Double Cabin. Step in from aft deck. To port is storage unit housing calorifier and electrical distribution. Half height storage cupboard at aft end of cabin. The double berth is crossways with split mattress, c.6ft x 4ft 6in. Against the forward bulkhead is a timber chest of drawers and further storage unit. Passageway to starboard with radiator on hull side opposite full height storage cupboard. Double doors lead off into ...



Cabin 2: Bathroom. Half tiled in a mottled blue tile with insert décor tiles. The bath area is fully tiled. ¾ size bath with antique style types with hand held shower that can be mounted at high level for showering. Tecma remote pump out toilet . White hand basin inset into granite effect worktop with varnished timber cupboards below. Bathroom cabinet on bulkhead. Opening side doors off corridor which leads forward into ...

Just Perfick continued



Cabin 3: Galley. Predominantly lengthways to port with granite effect laminate work surface over varnished timber cupboards and drawers below. Against the aft bulkhead is a $\frac{3}{4}$ height Teba 240v fridge freezer unit. Inset into the work surface is a $1\frac{1}{2}$ bowl green composite material sink / drainer and Vanette 4 burner hob in green. Below work surface is a matching green Vanette 4000 grill and oven. Also below

work surface is a Bosch Classic 240v washing machine. High level storage cupboards with feature leaded light door display section. Green 240v microwave. Opposite is a pine dresser unit. The galley is semi open plan to

...

Cabin 4: Saloon. Designed to take free standing furniture currently comprising 3 seat sofa / divan. Forward are steps incorporating storage up to forward well, with to either side curved top under gunnel storage units.



This boat has not been cleared and personal possessions will be removed prior to sale.

GENERAL

Berth transferable: Possible cruising berth by arrangement

Sale type: Private

Viewing: By appointment.

PLEASE NOTE

In this case we are acting as Brokers only.

Whilst every care has been taken in their preparation, the correctness of these particulars is not guaranteed.

The particulars are intended only as a guide and they do not constitute a term of any contract.

A prospective buyer is strongly advised to check the particulars and where appropriate at his own expense to employ a qualified Marine Surveyor to carry out a survey and / or to have an engine trial conducted which if conducted by us shall not imply any liability for such engine on our part.

The Vendor is not selling in the course of a business.

All sales subject to contract. No guarantee is given or implied as to the condition or legal title.

No appliances or systems have been tested. All measurements stated are approximate.

© Virginia Curren Marine Ltd 2011

Accredited Members of

