

Midnight Rose continued

Mechanical & Electrical.

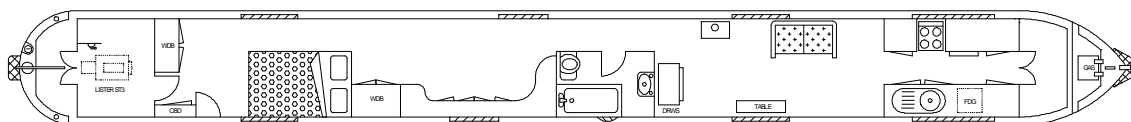
Engine: Lister ST3 Gearbox: PRM 260 hydraulic Cooling: Air
Calorifier feed: No Last service: 2011
Bowthruster: No
Weed hatch: Quick release Stern gland greaser: Remote
Bilge pump: 12v
Batteries: 12v - 4no
240v: Yes Inverter: 800w Charger: No Generator: Engine driven 5kVa

Interior.

Lining - floor to gunwale: Mottled carpeting
Lining - gunwale to ceiling: Satin varnished oak faced panelling with matching trim
Lining - ceiling: Off white faced panelling
Bulkheads: Satin varnished oak faced panelling
Flooring: Predominantly floral patterned carpet with timber laminate to galley
Lighting: 12v halogen and additional wall lights
Cabin heating: Solid fuel stove in saloon with back boiler and radiators
Insulation: Not known
Water heating: Vaillant gas
Headroom: 6ft 1in

ACCOMMODATION (From aft)

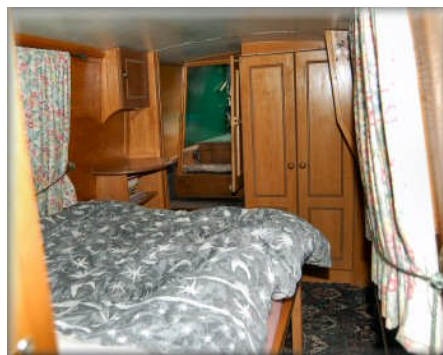
Cabin Arrangement: Engine space / Double cabin / Dressing room / Bathroom / Saloon / Galley



Berth arrangement: 4 berth - fixed double in own cabin and convertible double in saloon

Cabin 1: Engine space. Fully lined in painted timber. The engine is fully enclosed with soundproofed lining. Door to starboard leads forward into ...

Cabin 2: Double cabin. Against the aft bulkhead is a double fronted wardrobe unit. The double bed is lengthways to starboard with mattress c.6ft x 4ft. Open storage below bed. High level shelf over head of bed incorporating reading lights. Doorway continues forward into ...



Midnight Rose continued



Cabin 3: Dressing room. The dressing area is very spacious with varnished timber constructed storage units to starboard, which includes a double fronted wardrobe and gunnel height cupboards in a 'U' shape. Radiator on hull side. Passageway to port continues forward with door off into

Cabin 4: Bathroom. White ¾ sized bath with shower attachment. Thetford electric flush cassette toilet. White china semi inset hand basin over white cupboard unit. Mirror on bulkhead. Passageway continues forward into ...

Cabin 5: Saloon. At the aft end the solid fuel stove is mounted on a steel hearth with tiled rear. Remaining furniture is free standing, comprising a set of pine drawers, drop leaf table unit and 2 seat sofa unit which can convert to a double berth if required. The saloon is open plan to ...



Cabin 6: Galley. Organised on both sides of the craft with dark grey granite effect laminate work tops over varnished timber cupboards. To port is a Stoves Newhome 4 burner cooker with grill and oven in cream. To starboard is an inset stainless steel sink and drainer unit with mixer tap. Below work top is an Shoreline 12v refrigerator. Gas water heater on forward bulkhead. Step up to forward well.

This boat has been cleared and will be sold as viewed, including 12v colour TV.

GENERAL

Berth transferable: The purchaser will benefit from the remainder of the berth period, which is paid to July 2012.

Sale type: Private **Viewing:** By appointment.

PLEASE NOTE

In this case we are acting as Brokers only.

Whilst every care has been taken in their preparation, the correctness of these particulars is not guaranteed.

The particulars are intended only as a guide and they do not constitute a term of any contract.

A prospective buyer is strongly advised to check the particulars and where appropriate at his own expense to employ a qualified Marine Surveyor to carry out a survey and / or to have an engine trial conducted which if conducted by us shall not imply any liability for such engine on our part.

The Vendor is not selling in the course of a business.

All sales subject to contract. No guarantee is given or implied as to the condition or legal title.

No appliances or systems have been tested. All measurements stated are approximate.

© Virginia Currer Marine Ltd 2011

Accredited members of

