

# Virginia Currer Marine Ltd

## Inland Waterway Specialists

Delta House Delta Way Thorpe Egham Surrey TW20 8RX

Tel: 01784 432111

Fax: 01784 432777

Mob: 07860 480079

Email: [jc@vcmarine.co.uk](mailto:jc@vcmarine.co.uk)

Web: [www.vcmarine.co.uk](http://www.vcmarine.co.uk)

## UNICORN [DRAFT]

## £29,500

### General.

*Builder:* Colecraft / Warwickshire Fly Boat Co      *Fitted:* Rex Waine

*Type:* Replica working cargo boat

*Year:* 1978

*Length:* 50ft (15.2m)      *Beam:* 6ft 10ins (2.1m)      *Draught:* c1ft 9in (.6m)

*Lying:* Newbury, Kennet & Avon Canal

*BW no:* 54732

*CIN No:* N/a

*BSC to:* New TBI

### History

Although originally built in 1978 by Colecraft, the underwater hull sections have been overplated by Sirius Yachts Ltd. A new steel superstructure has fabricated by the Warwickshire Fly Boat Company, which includes a 25ft 'clothed' cargo hold. The interior fit has been carried out by Rex Waine. The superstructure paintwork is by Phil Speight, in the style of the historic British Waterways colour scheme. The vessel is therefore a modern copy of an original working cargo boat.

### Hull & Exterior.

*Material / build:* All steel.      *Thicknesses:* Overplated to waterline in 5 and 6mm plate.



*Exterior:* Black bitumen painted hull to side decks. Side decks and roof in old fashioned red. Boatman's cabin and engine room in high quality 'Phil Speight' British Waterways livery.

*Windows:* Fixed polished brass portholes.

*Forward well:* Rope fender. Steel cants. 'T' stud. Storage locker. Forward cratch supporting 'top board' with 'clothed over' hold area.

*Roof:* Integral steel handrails, top engine exhaust, and glass 'bullseye'. Pigeon box over engine room. Sliding hatch over access aft.

Unicorn continued

*Aft deck:* Rope fender, 2 mooring dollies, steel cants. Tiller steering. Self draining deck with inset steel hatch to weed hatch trunking. Two central timber lined steel doors featuring canal decoration to accommodation.

---

**Mechanical & Electrical.**

*Engine:* Rigas Dizelis PM-24 24hp new 2006  
*Gearbox:* Newage PRM 260 hydraulic *Cooling:* Water  
*Calorifier feed:* No  
*Bowthruster:* No  
*Weed hatch:* Trunk access from deck  
*Stern gland greaser:* Remote  
*Batteries:* 12v x 2  
*240v:* No *Inverter:* No  
*Charger:* No *Generator:* No

---

**Interior.**

*Interior:* The interior comprises the boatman's cabin and engine room. These are finished in the traditional style with 'scumbled' paint, and red trimmed inset panels featuring canal décor of roses etc.

*Cabin heating:* Premier solid fuel range in boatman's cabin

*Insulation:* Not known

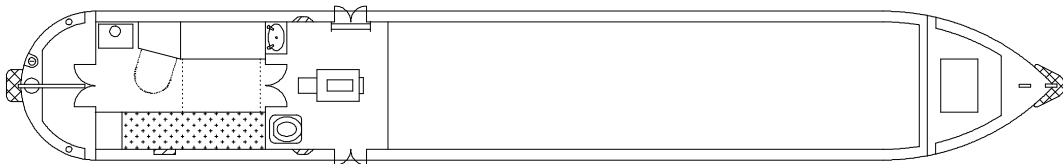
*Water heating:* None

*Headroom:* c.5ft 6in

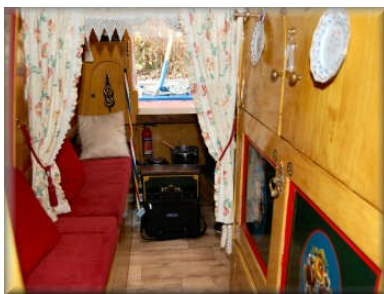
---

**ACCOMMODATION** (From aft)

*Cabin Arrangement:* Boatman's cabin / Engine room



*Berth arrangement:* 2 berth - cross double in boatman's cabin



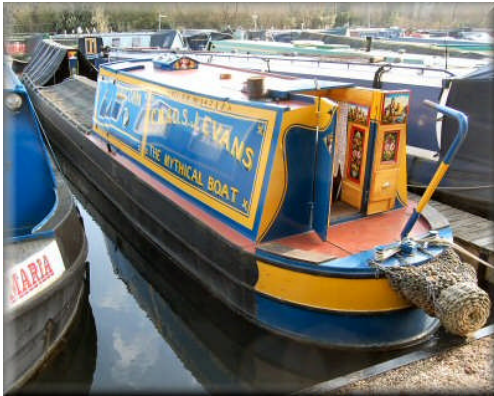
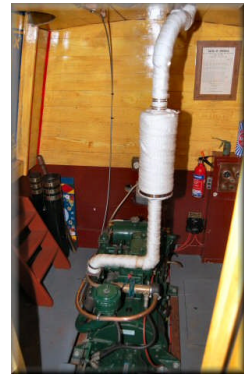
*Cabin 1: Boatman's Cabin.* Step down from aft deck. The cabin is a typical replica of a traditional working boat aft cabin. To port is a solid fuel range, drop down table with 'crumb' drawer below and drop

cross double berth. To starboard is a full length seating unit with upholstered foam cushioning. This could be used as a single berth instead of the cross double. Two central doors lead forward into .....



Unicorn continued

**Cabin 2:** Engine room. The engine is fully lined and floored with traditional scumble finishes. The engine is centrally mounted with polished brass work and top exhaust. Opening side doors to both sides with hull mounted steps to port. Against the aft bulkhead is a small white hand basin with portable water supply and chemical toilet.



The remainder of the vessel comprises c.25ft of open hold, with fully clothed over deck boards in the traditional style.

This boat has been cleared and will be sold as viewed.

---

#### GENERAL

**Berth transferable:** Possible cruising berth by arrangement

**Sale type:** Private

**Viewing:** By arrangement.

**Other sale considerations:** Please note that this vessel has no galley, permanent water supply or gas supply.

#### PLEASE NOTE

*In this case we are acting as Brokers only.*

*Whilst every care has been taken in their preparation, the correctness of these particulars is not guaranteed.*

*The particulars are intended only as a guide and they do not constitute a term of any contract.*

*A prospective buyer is strongly advised to check the particulars and where appropriate at his own expense to employ a qualified Marine Surveyor to carry out a survey and / or to have an engine trial conducted which if conducted by us shall not imply any liability for such engine on our part.*

*The Vendor is not selling in the course of a business.*

*All sales subject to contract. No guarantee is given or implied as to the condition or legal title.*

*No appliances or systems have been tested. All measurements stated are approximate.*

© Virginia Curren Marine Ltd 2011

Accredited members of

