

Virginia Currer Marine Ltd

Inland Waterway Specialists

Delta House Delta Way Thorpe Egham Surrey TW20 8RX

Tel: 01784 432111

Fax: 01784 432777

Mob: 07860 480079

Email: jc@vcmarine.co.uk

Web: www.vcmarine.co.uk

BRANSON II

£195,000 inc VAT

General.

Builder: Branson Designs / HMS Marine Ltd

Type: Replica Dutch Barge

Fitted: HMS Marine Ltd *Year:* 2008

Length: 66ft (20m) *Beam:* 13ft 6ins (4.1m) *Draught:* c.2ft 6ins (0.79m)

Lying: London Docks.

BW no: N/A

CIN No: Yes, TBA (Category C)

BSC to: N/A

Small Ships Register No: 134001

History

The vessel is the second of its type that has been built on a Branson designed hull, with quality professional interior fit.

Hull & Exterior.

Material / build: All steel. Thicknesses: 12mm x 6mm x 6mm



Exterior: Red anti-fouling to cream waterline. Hull sides in dark red with non slip finished dark red side decks. Superstructure in cream with the handrails picked out in red.

Windows: Four double glazed fixed portholes and four double glazed drop back arched top windows on each side made by Houdini Windows Ltd.

Forward well: Raised steel bulwarks. Stainless steel mooring bollards. Hawsepipe for anchor. Vetus hydraulically powered anchor winch. Hinged hatch to forepeak below which houses hydraulic bowthruster drive motor and diesel central heating boiler.

Roof: Forward superstructure roof with tubular steel handrail and solid hardwood light mast in tabernacle. Two double glazed Houdini hatches. Opening solid hardwood double glazed skylight over saloon.

'Branson II' continued

Aft deck: Stainless steel mooring bits. Two lockers adjacent to the wheelhouse, one containing 3 x 15kg gas bottles and one providing storage and air intake for engine room. The wheelhouse is built from solid mahogany and is double glazed. It is collapsible by means of lift off roof panels which are fully insulated, and hinged side panels.

Mechanical & Electrical.

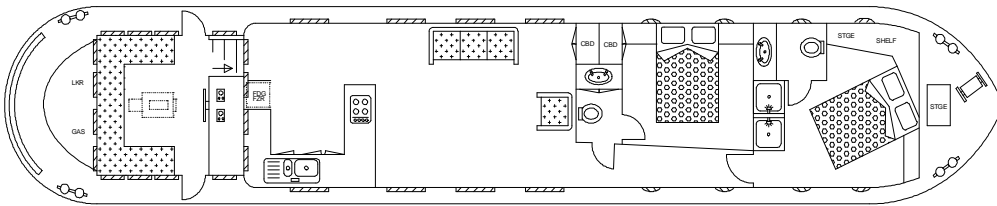
Engine: Vetus Deutz 6 cylinder turbo charged 180hp diesel. Hydraulic power take off powering bowthruster and anchor windlass.
Gearbox: Hydraulic
Last service: Engine new. *Control:* Single lever.
Cooling: Indirect raw water.
Calorifier feed: Yes, but currently not connected (second coil available to connect to if required).
Bowthruster: Vetus hydraulic.
Weed hatch: Quick release. *Stern gland greaser:* Water lubricated.
Bilge pump: 12v and additional manual pump.
Batteries: 12v *Domestic:* 6 x 135amp hour *Engine:* 1 x 135 amp hour
Generator: 1 x 135amp hour
240v: Yes, with isolating transformer
Inverter: Victron Phoenix combi unit 2.5kva inverter and 120 amp hour charger for domestic batteries.
Charger: Victron Combi and additional Centaur 20amp charger for engine battery.
Generator: Vetus 6kva diesel powered fully cocooned.
Instrument panel: Comprehensively equipped, including level gauges for fresh water/heating oil / black water and diesel tank; remote generator control panel; Phoenix combi unit remote control; bilge pump switching; Vetus main engine panel; bowthruster control; gas detector.
Navigation equipment includes Raymarine RL80C radar / chart plotter; ICOM M503 VHF with DSC; Vetus clear screen. Ray Marine depth sounder; Racor alarm water in diesel filters.

Interior.

Lining - floor to gunwale: Off white painted panelling with matching trim.
Lining - gunwale to ceiling: As above.
Lining - ceiling: White satin finish painted panelling with matching trim.
Bulkheads: As cabin sides.
Curtains: Ocean roller blinds fitted to all windows.
Flooring: Pale brown carpet tiles through majority of the vessel with additional rugs to the saloon. The galley area is finished in a timber effect 'Cushion Floor' and the wheelhouse has 15mm solid routed tongue & groove oak.
Lighting: 12v halogen.
Cabin heating: Worcester Bosch diesel fired by boiler with radiators.
Insulation: Spray foam.
Water heating: Calorifier heated by central heating boiler and 240v immersion. Spare coil to enable heating from engine if required. Additionally, the boiler unit is a combi unit and can provide hot water directly.
Water system: 12v pressurised.
Headroom: 6ft 3ins

ACCOMMODATION (From aft)

Cabin Arrangement: Wheelhouse / Galley / Saloon / Toilet compartment / Guest Cabin / En suite Master Cabin.

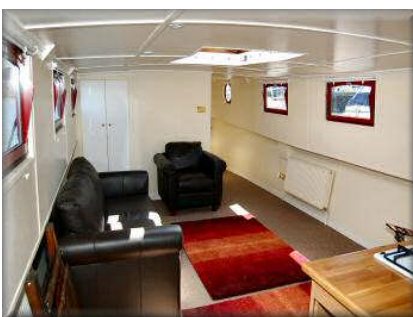


Berth arrangement: 4 berth: double berth guest cabin, effectively en-suite and further master en-suite double cabin.



Cabin 1: Wheelhouse. Doors to port and starboard open into wheelhouse. The wheelhouse offers panoramic views and has seating to the side and rear. It is finished in solid routed 15mm tongue & groove oak with the comprehensively equipped helm position centrally forward. The wheelhouse is fully collapsible. Steps to starboard lead down into:

Cabin 2: Galley. The galley is 'U' shaped and to starboard. Varnished hardwood work surface with solid timber cupboards and drawers below. Against the aft bulkhead is a full height fridge / freezer with matching décor doors. Tiled splashback. Inset one and a half bowl stainless steel sink and drainer. Hotpoint four burner hob in white with matching grill and oven below. Hotpoint washer/dryer. The galley is open plan to:

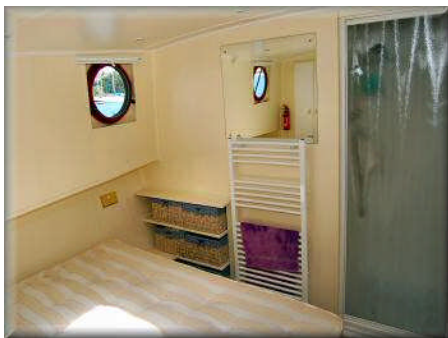


Cabin 3: Saloon. The saloon is designed to take freestanding furniture currently comprising leather two seater sofa and a matching armchair. Incorporated into the aft bulkhead is a full height storage cupboard with hanging rail. TV point with amplifier. Telephone/Computer points. The passageway to starboard leads forward with door to port into:

Cabin 4: Toilet Compartment 1. Tecma remote pump out toilet. Round white china hand basin inset into white work surface with white fronted cupboards below. Decoratively tiled splashback to rear and both sides with mirrors over. The passageway continues forward with door to port into:



'Branson II' continued



Cabin 5: Guest Cabin. The double berth is located crossways centrally with three sided access. Interior sprung mattress measuring 6ft 3ins x 4ft 6ins. Shelves to each side of head of bed. TV point with amplifier. Telephone/Computer points. Incorporated into the aft bulkhead is a full height cupboard with hanging rail and shelved storage, and a glass doored fully tiled shower cubicle with thermostatic chrome

shower head on riser rail. The passageway continues forward through door into:

Cabin 5: Master Cabin with en-suite. The double berth is placed centrally at a slight angle against the forward bulkhead. Interior sprung mattress measuring 6ft 3ins x 4ft 6ins. Shelving to either side of head of bed. TV point with amplifier. Telephone/Computer points. Against the aft bulkhead is a full height double fronted cupboard with hanging rail alongside a glass fronted door into fully tiled shower cubicle with chrome shower head on riser rail and thermostatic shower unit. Alongside the shower is a door into en-suite toilet. Tecma remote pump out toilet. White china round hand basin inset into white work surface with white fronted cupboards below. Razor point. Tiled splashback. Mirror fronted bathroom cabinet incorporated into bulkhead over basin.



This boat has not been cleared and personal possessions will be removed prior to sale.

GENERAL

Berth: The berth is located on the River Crouch on a mud berth and has electricity and water laid on and 24 hour access is available. The local station gives access to London, Liverpool Street and takes approximately one hour.

Berth transferable: Possibly by arrangement, and although not residential, Pied a Terre usage is accepted.

Berth fees: Currently £1,480 per annum (including VAT). **Sale type:** Business.

Viewing: Strictly by appointment.

Other sale considerations: There is a full manufacturer's warranty on all Vetus equipment from 1 August 2008.

PLEASE NOTE

These details are believed to be correct but cannot be guaranteed. They are based on information provided by the current owner(s) and observation.

Prospective purchasers are strongly advised to have an independent survey carried out to satisfy themselves as to the condition of the vessel, its inventory, and the information contained herein.

These details are not intended to, and do not, form any part of any current or future contract.

In this transaction we are acting as Brokers only. All sales subject to contract.

No guarantee is given or implied as to the condition or legal title.

No appliances or systems have been tested.

All measurements stated are approximate

© Virginia Currer Marine Ltd 2008