

Virginia Currer Marine Ltd

Inland Waterway Specialists

Delta House Delta Way Thorpe Egham Surrey TW20 8RX

Tel: 01784 432111

Fax: 01784 432777

Mob: 07860 480079

Email: jc@vcmarine.co.uk

Web: www.vcmarine.co.uk

BRASENOSE [DRAFT]

£150,000

General.

Builder: **Oxford College Barge** *Type:* Historic Oxford Barge *Year:* 1926

Fitted: Major refit in 2001 comprising hull overplating where required, superstructure refurbishment, and full internal rebuild.

Length: 69ft 6in 22.1(m) *Beam:* 14ft 6ins (4.4m) *Draught:* c1ft 9in (.6m)

Lying: Henley, River Thames, on highly desirable residential berth

BW no: N/a

CIN No: N/a

BSC to: Sept 2012

History

This vessel is one of very few remaining Oxford College Barges, and is therefore of significant historic interest. The vessel was subject to an extensive refurbishment, coving the hull, superstructure and intern fitting.

Hull & Exterior.

Material / build: Rivetted steel. Thicknesses: 6mm hull with sides overplated to waterline. Steel cabin sides, and roof comprising tongue and groove planking, covered in 18mm Brazilian marine ply, and overall GRP sheathing with 'grass' effect covering.



Exterior: Black bitumen painted. Cabin sides in blue.

Windows: Fully opening white PVC double glazed.

Forward well: None. The original open well is now incorporated into the rest of the superstructure, and provides a fully glazed conservatory, currently used as an office / study.

Roof: The entire roof area provides an expansive sitting out area. The whole is bounded by a varnished teak capped steel railing. Accessed from the bankside.

Aft deck: None.

Mechanical & Electrical.

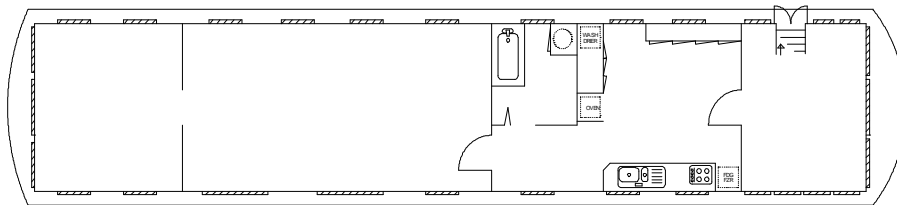
Engine: Unpowered

Interior.

- Lining - internal:* Combination of Hessian covered 12mm ply, ash veneered ply and mahogany veneered ply
- Lining - ceiling:* White painted close boarded planked timber with decorative exposed cross beams in black.
- Curtains:* Combination of roman blinds and integrated venetian blinds
- Flooring:* Pale blue carpeting to bedroom, pale terracotta in saloon, tile effect vinyl to galley and dining area, and marble effect vinyl to bathroom
- Lighting:* 240v throughout
- Cabin heating* 240v radiators
- Insulation:* Sprayfoam
- Water heating* Hot water tank with 240v immersion, mains water fed
- Headroom:* 8ft 0in
-

ACCOMMODATION (From aft)

Cabin Arrangement: Double cabin / Saloon / Bathroom / Galley and Dining area / Conservatory

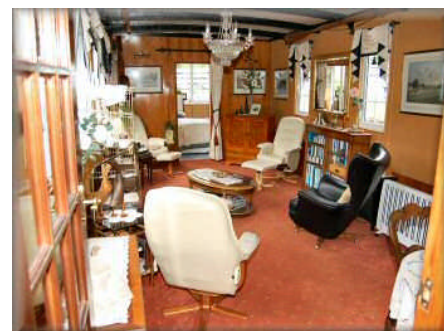


Berth arrangement: 2 berth - double bed in own cabin

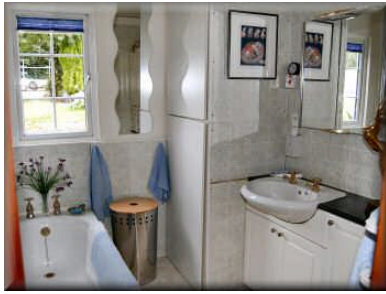
Cabin 1: Double cabin. 11ft 3in x 11ft 9in. The cabin is designed to take a free standing double bed and furniture. Windows to three aspects, with those aft being the full width of the vessel. Central doorway with curtain across into into ...



Cabin 2: Saloon. 23ft 6in x 11ft 9in. Very spacious and much natural light, the area is designed for free standing furniture, and is a feature of the vessel. Varnished hardwood glazed door to starboard leads forward with bi-fold timber door into ...



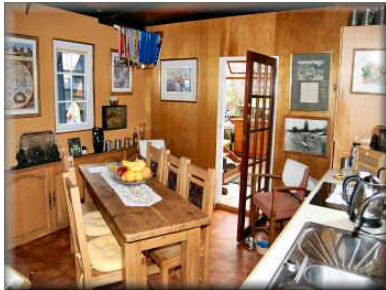
Brasenose continued



Cabin 3: Bathroom. Finished in a pale blue granite tile effect panelling. Full sized bath with brass effect antique style taps. Gloss black granite effect surface with semi inset white china hand basin with antique style brass taps. Cupboard storage below. Heated towel rail. Cupboard housing hot water tank. Space for chemical toilet. Passageway continues forward

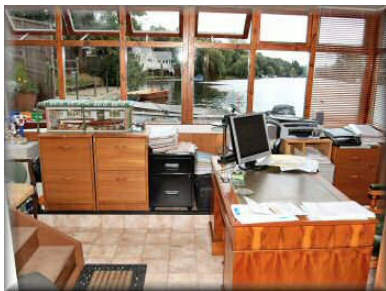
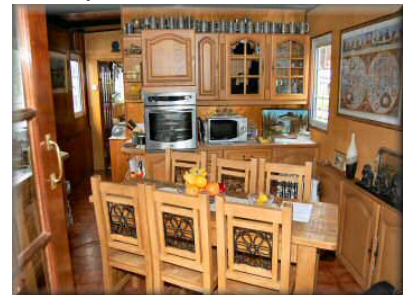
into ...

Cabin 4: Galley / Dining area. Against the forward bulkhead is a timber trimmed pale laminate work surface with varnished timber cupboards and drawers below. Tower unit housing Diplomat Select 620 electric oven and grill. Further section of matching high level display cupboards over. Below work surface is a



combi washer/drier. To starboard is a further long run of matching work surface with storage below. Inset Diplomat gloss black electric hob and stainless steel one and a half bowl sink and drainer unit with mixer tap. Tower unit housing tall fridge/freezer. On the port hull side and shallow under gunnel matching cupboard units.

The dining area allows for a large dining table and chairs. Central glazed hardwood door leads forward into



Cabin 5: Conservatory. Currently used as an office, but could also be a study / sun room. Fully glazed on three sides with multi wall polycarbonate roof. Steps up to side entry / exit door.

This boat has not been cleared and personal possessions and furniture will be removed prior to sale.

GENERAL

Berth transferable: Residential berth transferable by arrangement.

Berth fees: Currently £8,500pa **Sale type:** Private **Viewing:** By appointment.

PLEASE NOTE

In this case we are acting as Brokers only.

Whilst every care has been taken in their preparation, the correctness of these particulars is not guaranteed.

The particulars are intended only as a guide and they do not constitute a term of any contract.

A prospective buyer is strongly advised to check the particulars and where appropriate at his own expense to employ a qualified Marine Surveyor to carry out a survey and / or to have an engine trial conducted which if conducted by us shall not imply any liability for such engine on our part.

All sales subject to contract. No guarantee is given or implied as to the condition or legal title.

No appliances or systems have been tested. All measurements stated are approximate.

The Vendor is not selling in the course of a business.

© Virginia Currer Marine Ltd 2009