

Virginia Currer Marine Ltd

Inland Waterway Specialists

Delta House Delta Way Thorpe Egham Surrey TW20 8RX

Tel: 01784 432111

Fax: 01784 432777

Mob: 07860 480079

Email: jc@vcmarine.co.uk

Web: www.vcmarine.co.uk

JO JA

£120,000

General.

<i>Builder:</i> Not known	<i>Type:</i> Dutch Barge	
<i>Fitted:</i> Not known	<i>Year:</i> 1913	
<i>Length:</i> 82ft (25m)	<i>Beam:</i> 17ft (5.2m)	<i>Draught:</i> c.5ft (1.7m)
<i>Air height:</i> In excess of 8ft with wheelhouse lowered		
<i>Lying:</i> River Thames, between Staines and Chertsey		
<i>BW no:</i> 505622 (reg. lapsed)	<i>CIN No:</i> N/a	<i>BSC to:</i> New

History

The vessel has been in the current ownership since 1976, during which she has been extensively cruised on the European canals. She was last out of the water and the hull surveyed in 2005, and the vessel was found to be fully insurable (no hull problems).

Hull & Exterior.

Material / build - Hull : Rivetted 6mm steel
Superstructure: Combination of welded steel and 'cargo boards' fully insulated and waterproofed.



Exterior: Blue painted hull sides with white sheer line. Pale grey side decks, with Superstructure in white.

Forward: Raised bulwarks. Manual anchor winch servicing two anchors via hawse pipes. Deck hatch giving access to forepeak which has in the past been used for crews quarters, but is now used storage. Two large storage lockers against superstructure. Light mast in tabernacle.

Roof: The roof is composed of the 'cargo boards', which have been externally insulated and weatherproofed. .

Wheelhouse: Aft wheelhouse with timber demountable superstructure. Access to 'skipper's quarters' forward, which are separate from the main accommodation. Wheel steering. Gas bottle locker behind the wheelhouse (note: the gas supply is disconnected and not functional).

Jo Ja continued

Mechanical & Electrical.

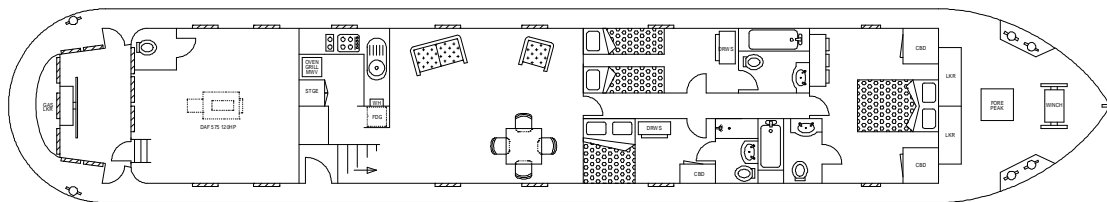
Engine: Daf 575 turbocharged 6 cyl 120hp Gearbox: Hydraulic
Cooling: Indirect raw water
Calorifier feed: No Bowthruster: No
Weed hatch: None Batteries: 24v 240v: Yes
Inverter / charger: Mastervolt Dakar 5kva full sine wave inverter and Mastervolt Combi
24/2400 combination inverter / charger
Generator: Vetus diesel driven c. 2500w

Interior.

Lining - floor to gunwale: Combination of routed tongue and groove hardwood and timber effect panelling.
Lining - ceiling: White painted timber.
Bulkheads: Timber effect panelling.
Flooring: Combination of carpeting and close boarded solid timber planking.
Cabin heating: 240v throughout
Water heating: Hot water tank with 240v immersion heater
Headroom: Variable, predominantly in excess 6ft 7in

ACCOMMODATION (From aft)

Cabin Arrangement: Wheel house / skipper's quarters / galley / saloon / en suite cabin 3 / en suite cabin 2 / en suite master cabin



Berth arrangement: 6 berth – double guest cabin, twin guest cabin and master cabin

Cabin 1: Wheelhouse. Situated at the stern with access doors to either side. Rear wheel steering. Door to starboard gives access forward into



Cabin 2: Skipper's quarters. Currently used as a general storage area, but could be converted for use as a home office, workshop or further accommodation. Self contained wc compartment with original 'drop through' toilet. This area is separate from the remainder of the vessel.

Jo Ja continued

Door from starboard side deck gives access down stairs to small lobby area off which is ...

Cabin 3: Galley. The galley is 'L' shaped with pale granite effect work surface with grey fronted cupboards below. Inset oval sink and drainer unit. Inset 4 burner gas hob in stainless steel. Inset Gaggenau ring 240v hob unit. New World stainless steel finish 240v electric grill and oven and large Whirpool 240v microwave. Bulkhead mounted 'on demand' gas water heater (not connected). Located by the doorway into the galley is a ¾ height 240v refrigerator. Forward from lobby into:

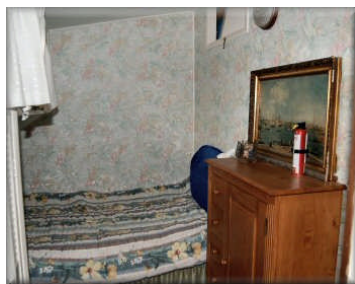
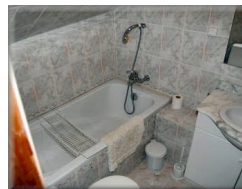


2



Cabin 4: Saloon. Designed to take free standing furniture, currently comprising 2 seat leather sofa with matching armchair, extendable dining table with chairs. Set into the aft bulkhead is a large serving hatch through to the galley. 240v fire with décor effect. Central door through into corridor leading forward off which is

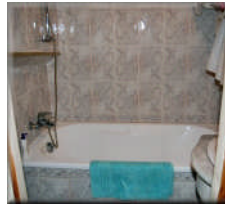
Cabin 4: Twin cabin. Configured with 2 single beds currently (a double bed could be accommodated instead). Free standing furniture includes a combination drawer / wardrobe storage unit. Door forward into en suite bathroom, fully tiled with decorative tiling. Full sized bath with hand held shower attachment. Remote pump out toilet. Decorative hand basin inset into pale marble worktop with storage cupboards below.



Cabin 5: Double cabin. Currently furnished with a double bed. Freestanding drawer / cupboard storage unit in pine. Further large storage cupboard. Door forward into en suite bathroom, fully tiled with decorative tiling. Hip bath with shower over and glass shower screen. Remote pump out toilet. White hand basin with storage cupboards below.

Jo Ja continued

Cabin 3: Master cabin. The master cabin occupies the full width of the vessel. The double bed is centrally placed against the forward bulkhead, with large storage cupboards to both sides.



Freestanding sideboard unit with drawer storage and further freestanding set of drawers. Door into en suite bathroom, fully tiled with a decorative tile. Full sized bath. Decorative hand basin inset into pale marble worktop with storage cupboards below. Remote pump out toilet.

This boat has not been cleared and personal possessions will be removed prior to sale.

GENERAL

Berth transferable: Possible cruising berth by arrangement, with some 'pied-à-terre' usage

Sale type: Private

Viewing: By arrangement.

Other sale considerations: Note that the gas water heater is not connected to the gas supply.

PLEASE NOTE

In this case we are acting as Brokers only.

Whilst every care has been taken in their preparation, the correctness of these particulars is not guaranteed.

The particulars are intended only as a guide and they do not constitute a term of any contract.

A prospective buyer is strongly advised to check the particulars and where appropriate at his own expense to employ a qualified Marine Surveyor to carry out a survey and / or to have an engine trial conducted which if conducted by us shall not imply any liability for such engine on our part.

The Vendor is not selling in the course of a business.

All sales subject to contract. No guarantee is given or implied as to the condition or legal title.

No appliances or systems have been tested. All measurements stated are approximate.

© Virginia Curren Marine Ltd 2011

Accredited members of

