

Virginia Currer Marine Ltd

Inland Waterway Specialists

Delta House Delta Way Thorpe Egham Surrey TW20 8RX

Tel: 01784 432111

Fax: 01784 432777

Mob: 07860 480079

Email: jc@vcmarine.co.uk

Web: www.vcmarine.co.uk

MOONANBAC

£135,000

General.

Builder: RLL Marine **Type:** Custom Built Barge with Aft Wheelhouse

Fitted: RLL Marine and current owner **Year:** 2002 / 3

Length: 57ft (17.36m) **Beam:** 12ft (3.65m) **Draught:** c1ft 9in (.6m)

Air height: c.9ft 6in (3m) (wheelhouse not collapsible)

Lying: St Katherines Dock, Central London

BW no: Not registered **SSR no:** 125275 **CIN No:** N/a (5 year exemption)

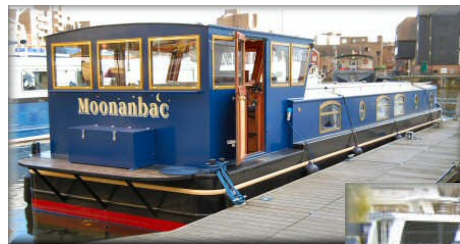
BSC to: Oct 2010 **VAT status:** Exempt on build

History

The hull was built in 2002, with most of the fit out by RLL Marine, and was completed in 2003 by the current owner.

Hull & Exterior.

Material / build: All steel shallow 'V' hull. **Thicknesses:** 10 / 6mm



Exterior: Blue antifouled to red boot topping. Hull sides in black with the rubbing strake picked out in cream. Matt black side decks with non slip finish. Cabin sides in blue with full width cream panel on roof. Steel non collapsable wheelhouse in blue.

Windows: Gold anodised top hopper opening arch top and portholes, 5 to port and 6 to starboard. Wheelhouse fully glazed.

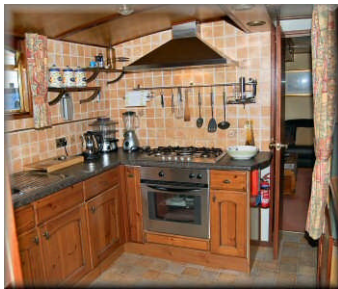
Fore deck: Raised bulwarks with fairleads. Mooring bits. Inspection hatch for water tank below deck (650gal / 3000l capacity).

Roof: Tubular steel handrail. 6 brass mushroom vents. Hinged hatch over forward entry doors. Flue for central heating boiler. Omni directional TV aerial. The wheelhouse is constructed in steel with side stable type entry doors each side.

Aft deck: Flat transom style stern with timber decked overhang. Timber storage locker on aft deck.

Moonanbac continued

Wheelhouse (continued): Storage below forward seat and dinette base. To starboard is a second seating unit, also housing 2 x 13kg gas bottles. The wheel steering (hydraulic) position is to starboard. Central doors with 3 steps down to



Cabin 2: Galley. The galley is to port and 'U' shaped. Dark granite effect laminate work surface over varnished timber cupboards and drawers below. Against the aft bulkhead is a tower unit with high level



storage and full height LG refrigerator. Inset one and a half bowl stainless steel sink and drainer unit with mixer tap. Inset Bosch stainless steel 5 burner gas hob with Electrolux matching grill and oven below. Stainless steel cooker hood with extractor fan. Opposite the galley is..

Cabin 3: Lower dinette. Pullman style dinette unit upholstered in green with seating for four. Storage within seating units. This unit can convert to a double berth if required. Passageway offset to starboard leads forward with door off into ...



Cabin 4: WC compartment. Mansfield Traveller pump out toilet. Granite laminate work surface with inset round stainless steel hand basin, and storage below. Mirror on bulkhead. Radiator on hull side. Door in passageway leads forward into ...



Cabin 5: Saloon. The saloon is primarily designed to take free standing furniture currently comprising large antique style coffee table and two leather sofas, one two seat and one three seat. 240v decorative stove. Low level side unit with storage and TV. Shelving on bulkhead. Radiator on hull side. Door to port leads forward into passageway. Radiator on hull side. Door to starboard off into ...



Cabin 5: Bathroom. Mansfield Traveller pump out toilet. White china hand basin inset into black granite work surface over white storage units below. Large step in fully tiled shower cubicle with glass door. Mirror on bulkhead. Heated towel rail. Door leads forward into ...

Moonanbac continued

Cabin 6: Double cabin. The double bed is to starboard with interior sprung mattress c.6ft 3in x 4ft 6in, with storage below. To port are built in units comprising full height storage with high level shelf and $\frac{3}{4}$ height hanging below. Further $\frac{3}{4}$ height cupboard with hanging rail. At the forward end of the units is a vanity unit / desk area. Varnished timber steps lead up to exit to fore deck.



This boat will be sold fully fitted and furnished, only personal effects will be removed prior to sale.

GENERAL

Berth transferable: Possible berth by arrangement.

Berth fees: c. £3,800 per half year.

Sale type: Private

Viewing: By appointment.

PLEASE NOTE

In this case we are acting as Brokers only.

Whilst every care has been taken in their preparation, the correctness of these particulars is not guaranteed.

The particulars are intended only as a guide and they do not constitute a term of any contract.

A prospective buyer is strongly advised to check the particulars and where appropriate at his own expense to employ a qualified Marine Surveyor to carry out a survey and / or to have an engine trial conducted which if conducted by us shall not imply any liability for such engine on our part.

The Vendor is not selling in the course of a business.

All sales subject to contract. No guarantee is given or implied as to the condition or legal title.

No appliances or systems have been tested. All measurements stated are approximate.