

# Virginia Currer Marine Ltd

*Inland Waterway Specialists*

Delta House Delta Way Thorpe Egham Surrey TW20 8RX

Tel: 01784 432111

Fax: 01784 432777

Mob: 07860 480079

Email: [jc@vcmarine.co.uk](mailto:jc@vcmarine.co.uk)

Web: [www.vcmarine.co.uk](http://www.vcmarine.co.uk)

**NIVOMA** [DRAFT]

**£69,000**

---

## General.

*Builder:* Groningen Luxemotor      *Type:* Luxemotor Dutch Barge  
*Fitted:* Currently fully fitted, but some upgrading now required      *Year:* 1927  
*Length:* 92ft (28.2m)      *Beam:* 16ft 6ins (5.1m)      *Draught:* c3ft 3in (1m)  
*Lying:* Sunbury, River Thames  
*BW no:* Not registered      *CIN No:* N/a      *BSC to:* Lapsed

---

## History

The vessel has been in the current ownership for some considerable time. She was last out of the water in 2005, at which time the hull was surveyed and a small amount of overplating was carried out. A feature of the vessel is the aft accommodation which has been maintained very much in the original style. Nivoma does require some internal refurbishment, and external repainting.

---

## Hull & Exterior.

*Material / build:* Riveted steel.      *Thicknesses:* 6mm



*Exterior:* Black bitumen painted hull to sheer strake. Pale grey sheer strake. Decks in old fashioned red, cabin sides in cream and roof in grey.  
*Fore deck:* Straight 'luxemotor' type stem. Flat foredeck with powered anchor winch and two anchors. Hinged hatch giving access to large forepeak storage area. Two mooring bits  
*Roof:* Welded steel superstructure with light mast forward. The wheelhouse upper section is in varnished timber, and is demountable.  
*Aft deck:* Small aft deck to rear of aft cabin superstructure.

---

## Mechanical & Electrical.

*Engine:* Daimler Benz 120hp      *Gearbox:* Brevo hydraulic      *Cooling:* Keel cooled  
*Bowthruster:* No  
*Batteries:* 24v  
*240v:* Yes      *Inverter:* No      *Charger:* No      *Generator:* No

---

**Interior.**

Lining – cabin sides: Predominantly veneer faced panelling

Lining - ceiling: Off white satin finished panelling

Flooring: Mainly carpeted

Cabin heating: Morso solid fuel stove in saloon

Insulation: Not known

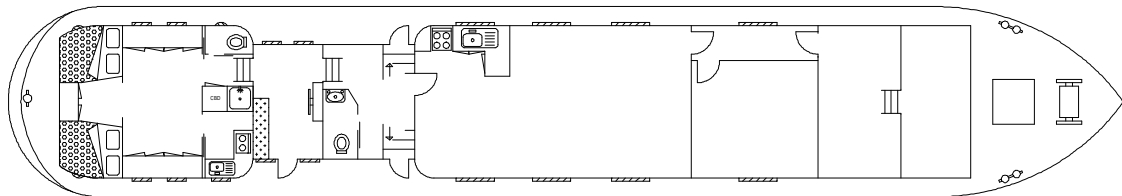
Water heating: Not known

Headroom: 6ft 7in

---

**ACCOMMODATION** (From aft)

Cabin Arrangement: Aft sleeping cabin / Wheelhouse / WC / Lobby / Galley / Saloon / Double cabin / Fore cabin



Berth arrangement: 6 berth – 2 x double in original aft cabin and further double cabin.

Cabin 1: Passageway continues forward into ...

Cabin 2: Aft cabin. The aft cabin is very much as originally used as the skipper's accommodation when used as a working craft. There are two large single / small double berths, each with foam mattress, maximum dimensions 6ft x 4ft (tapering). Sliding doors can separate these



from the 'living area'. Heating is provided by a drip feed diesel stove. To starboard is a sliding door into a small galley area with sink and a two burner gas cooker. Alongside is a step in shower unit. To port is a sliding door leading forward, with further sliding door into toilet compartment which originally had a 'drop through. Toilet, but which has now been



capped off. Steps up to .....

Cabin 3: Wheelhouse. Central wheel steering and control position. At the aft end is a small crossways seating unit. Steps to starboard lead down into ...



Cabin 4: Lobby area / WC. To each side are steps down from the side decks. A door leads off into a WC compartment, with wash hand basin and pump out toilet. Door to port leads forward into .....

Nivoma continued.....



**Cabin 5:** Galley. The galley is to port with 'L' shaped section of pale granite effect laminate work top with cupboards and drawers below. Inset single bowl sink and drainer unit. Free standing 4 burner gas cooker with grill and oven in brown. Opposite the galley is a large area that can be used for a dining table and chairs. Wide archway leads forward into.....

**Cabin 6:** Saloon. The spacious saloon is designed to take free standing furniture. The Morso solid fuel stove is central mounted to port on a stone hearth with tiled rear. Door to port leads forward with door off into .....



**Cabin 7:** Double cabin. The cabin is currently empty, but has plenty of space for a double berth. Bulkhead mounted white china hand basin with mirror over. Passageway continues forward with door and steps down into.....

**Cabin 8:** Fore cabin. The forward cabin currently is used as a utility area, and is not fully lined. It contains tankage, but could be used to extend the current accommodation if required.

This boat has been cleared and will be sold as viewed.

---

## GENERAL

**Berth transferable:** The vessel cannot remain on the current berth, and will have to be removed on sale.

**Sale type:** Private

**Viewing:** By appointment.

**Other sale considerations:** The vessel is offered for sale in the light of the fact that some refurbishment works are required.

## PLEASE NOTE

**In this case we are acting as Brokers only.**

**Whilst every care has been taken in their preparation, the correctness of these particulars is not guaranteed.**

**The particulars are intended only as a guide and they do not constitute a term of any contract.**

**A prospective buyer is strongly advised to check the particulars and where appropriate at his own expense to employ a qualified Marine Surveyor to carry out a survey and / or to have an engine trial conducted which if conducted by us shall not imply any liability for such engine on our part.**

**The Vendor is not selling in the course of a business.**

**All sales subject to contract. No guarantee is given or implied as to the condition or legal title.**

**No appliances or systems have been tested. All measurements stated are approximate.**

© Virginia Curren Marine Ltd 2011

Accredited members of

