

Virginia Currer Marine Ltd

Inland Waterway Specialists

Delta House, Delta Way, Thorpe, Egham, Surrey, TW20 8RX

Tel: 01784 432111

Fax: 01784 432777

Mob: 07860 480079

Email: jc@vcmarine.co.uk

Web: www.vcmarine.co.uk

NOSTALGIA

£49,000

General.

<i>Builder:</i> Not known	<i>Type:</i> Dutch Aak Barge	
<i>Fitted:</i> Current owners	<i>Year:</i> c.1930	
<i>Length:</i> 50ft (15.2m)	<i>Beam:</i> 11ft (3.3m)	<i>Draught:</i> 3ft (0.9m)
<i>Lying:</i> High Line Yachting, Iver		
<i>BW no:</i> 513543	<i>CIN No:</i> N/A	<i>BSC to:</i> July 2010

History

The boat was converted in Holland and last surveyed in 2005. At that time the hull was overplated in steel. The vessel has been in the current ownership for the past eighteen months with the intention that it be a retirement project but this plan is not to proceed and hence the boat is now being sold.

Hull & Exterior.

Material / build: Steel with full overplate. Thicknesses: not known



- Exterior:* Black bitumen painted hull to rubbing band. Bright red strip along hull above rubbing band with remainder of hull side in mid green. Superstructure sides in cream. Roof in mid green with non-slip finish. Decks in pale blue non slip.
- Windows:* Two large windows each side, one top hopper opening with additional four opening glazed scuttles each side.
- Forward well:* Aak style bows with flat foredeck. Two mooring bits. Light mast. Small manual anchor winch and hawse pipe with anchor attached. Stainless steel lifting derrick. The single gas bottle is timber enclosed at the foot of the light mast with space for a spare gas bottle beside if required.
- Roof:* Three ventilators. Glazed skylight over saloon. Brass pole and plank holder. Omni-directional TV aerial. Tubular steel handrails. The wheelhouse is demountable and collapsible and constructed from varnished timber.
- Aft deck:* Flat aft deck with timber capped solid steel surround around stern. The overall deck area is enclosed in a pram type canopy construction in green, with zip up side doors and flexible windows fitted to sides and rear. Aluminium checkerplate lift up hatches over engine space. Upholstered rear seating.

Nostalgia continued

Mechanical & Electrical.

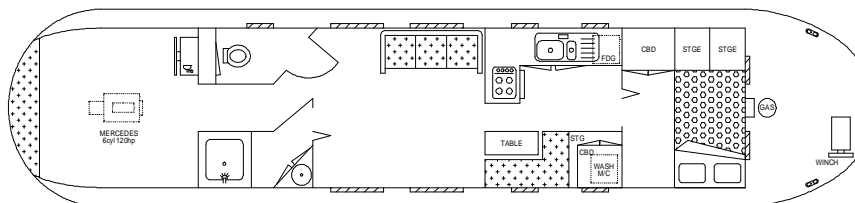
Engine: Mercedes 6 cylinder 120 hp.
Gearbox: Hydraulic
Last service: August 2007
Cooling: Raw Water
Bowthruster: No
Control: Single lever
Calorifier feed: No
Quick Release Weed hatch: No
Stern gland greaser: Remote
Bilge pump: Wiring present
Batteries: 24v Domestic: 4 Engine: 2
240v: Yes with galvanic isolator fitted. Inverter: Victron Phoenix 3000 watt
Charger: Victron Centaur fully automatic Generator: No
Instrument panel: Key start and warning light.

Interior.

Lining - floor to gunwale: Oak faced panelling.
Lining - gunwale to ceiling: As above
Lining - ceiling: Narrow tongue & groove solid timber.
Bulkheads: Oak faced panelling.
Curtains: Maroon curtains hung on timber rails with decorative rope holdbacks.
Flooring: Timber laminate throughout.
Lighting: Inset 12v fluorescent.
Cabin heating Webasto central heating with Finrads, diesel fired.
Insulation: Mostly Rockwool with some polystyrene.
Water heating Calorifier from central heating only.
Water system: 24v pressurised.
Headroom: 6ft.

ACCOMMODATION (From aft)

Cabin Arrangement: Toilet Compartment / Bathroom / Saloon / Galley / Double Cabin.

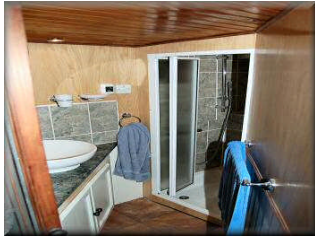


Berth arrangement: 4 berth: fixed double in own cabin and convertible sofa in saloon.

Steps lead down from the wheelhouse to corridor which passes to port. An angled door off the corridor leads into:

Cabin 1: Toilet Compartment. Sani Marin remote electric flush pump out toilet. On the rear bulkhead is a cupboard containing Victron inverter and Centaur 60watt battery charger. To the front of the cupboard are 24v distribution panels, Inverter controls, pump out tank gauge and Webasto controller. To starboard of the corridor is:

Nostalgia continued



Cabin 2: Bathroom, with step in shower compartment and bi-fold glass doors. The shower compartment is fully tiled in a grey granite effect tile with thermo controlled shower. Matching work surface with modern surface mount round china basin thereon and fully tiled splash back, extractor fan, mirror over basin, storage cupboards below work surface. The entrance to the bathroom is via a bi-fold door half glazed with decorative frosted glass. The corridor leads into:

Cabin 3: Saloon. The saloon is designed to take free standing furniture and currently comprises a three seat convertible settee which can be used to form a double berth. Flat screen television mounted on the bulkhead. The saloon is open plan to:



Cabin 4: Galley. The galley is to port with timber block effect work surface and white cupboards and drawers below. Inset into the work surface is a Stoves Newhome G600H gas cooker in stainless steel and stainless steel one and a half bowl sink and drainer unit. By the work surface is a full size 240v refrigerator and inset into the forward bulkhead is a Vanette

GG2200 grill and oven in stainless steel finish. Opposite the galley to starboard is a small 'L' shaped dining unit with demountable table on Desmo style leg and upholstered seat cushion. Ahead of this to starboard is a high level cupboard unit with curtained off open storage below. Two central bi-fold doors, half glazed with decorative frosted style glass, lead forward into:



Cabin 5: Double Cabin. Opening into the double cabin but effectively housed in part of the full height cupboard in the galley is a Whirlpool automatic washing machine which is to starboard. To port is a full height storage unit with high and low level cupboards. The double bed is arranged widthways along the forward bulkhead with interior sprung mattress measuring 6ft 3ins x 4ft 3ins with, at the foot of the bed, mid height top opening storage lockers.

This boat has not been cleared and personal possessions will be removed prior to sale.

Nostalgia continued

GENERAL

Berth transferable: No

Sale type: Private

Viewing: By appointment.



PLEASE NOTE

These details are believed to be correct but cannot be guaranteed. They are based on information provided by the current owner(s) and observation.

Prospective purchasers are strongly advised to have an independent survey carried out to satisfy themselves as to the condition of the vessel, its inventory, and the information contained herein.

These details are not intended to, and do not, form any part of any current or future contract.

In this transaction we are acting as Brokers only. All sales subject to contract.

No guarantee is given or implied as to the condition or legal title.

No appliances or systems have been tested.

All measurements stated are approximate.