

Olive continued

Mechanical & Electrical.

Engine: Lister HR6 6cyl Gearbox: PRM hydraulic Cooling: Air
Calorifier feed: No

Bowthruster: No

Weed hatch: None Stern gland greaser: Remote
Bilge pump: 12v

Batteries: 12v Domestic: 1 Engine:
240v: Yes Inverter: No Charger: No Generator: No

Interior.

Lining - floor to gunwale: Part pale green painted panelling, and part mahogany faced varnished panelling with matching trim

Lining - gunwale to ceiling: As above

Lining - ceiling: As above

Bulkheads: As above

Flooring: Predominantly close boarded oak laminate

Lighting: 240v

Cabin heating: Solid fuel stove with back boiler and 240v circulating pump

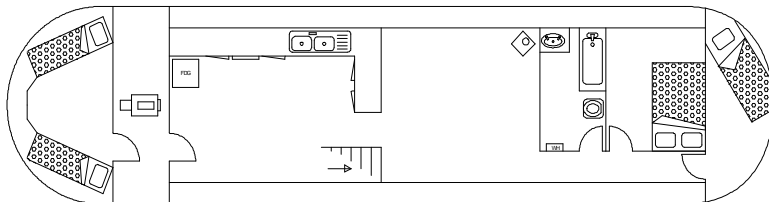
Insulation: Sprayfoam

Water heating: Vaillant gas

Headroom: 6ft 10in

ACCOMMODATION (From aft)

Cabin Arrangement: Twin aft cabin / Engine room / Galley and Dining / Saloon / Bathroom / Double Cabin / Single Cabin



Berth arrangement: 5 berth - double in own cabin, twin single cabin and a further single cabin



Cabin 1: Aft cabin. The aft cabin is accessed from the engine room and is fitted in a very traditional style with cupboards 'wrapped' around the stern. Currently fitted with two single berths, the cabin would easily convert to an office or workroom if required. Cupboard space around aft contours of the vessel. Door to starboard leads forward into

Cabin 2: Engine room. The engine room is fully spray foam insulated. Exposed 6 cylinder diesel engine and electrical systems. Door to starboard leads forward into ...

Olive continued

Cabin 3: Dining / Galley. A large area with the 'L' shaped galley to port. Oiled woodblock work surfaces over contemporary solid timber oak cupboards and drawers below. Canon Chichester 4 burner gas hob with grill and oven below. Inset twin bowl sink and drainer. Free standing full height Bosch frost free deep refrigerator / freezer in silver. Further range of high level cupboards and corner cupboard.



Opposite this is an area providing space for a dining table and chairs. At the forward end of this area solid timber steps up to deck level. Offset doorway to starboard leads forward into ...

Cabin 4: Saloon. The solid fuel stove is mounted a tiled hearth to port at the forward end to port. Also to port is an under gunnel storage unit designed to house video and sound systems. Remaining area is intended to take free standing furniture. Small steps down to corridor to starboard leading forward. Book shelving and under gunnel storage along corridor. Door to port into ...



Cabin 5: Bathroom. White full sized bath with antique style chrome taps with hand shower . Thetford Port Potta 365 chemical toilet and Blakes antique style remote pump out toilet. White china hand basin inset into oiled woodblock surface with white fronted cupboards below. Morco room sealed gas water heater on bulkhead. Mirror doored bathroom cabinet. Further door off corridor leads into

Cabin 6: Main sleeping cabin. Designed to take free standing furniture, which would typically be a single or double bed. Recessed curtained off under deck storage space with hanging rail. Corridor with shelving and cupboards leads forward to door into ...



Cabin 7: Forward Cabin. Wall mounted shelving. High level single berth with storage space below.

Olive continued

This boat has not been cleared and personal possessions will be removed prior to sale.

GENERAL

Berth transferable: Transferable residential berth by arrangement

Berth fees: An outstanding feature is the berth which has a large area of garden leading down to a stream. Space for car parking. Located on the garden is a timber structure that has been converted for use as an office, and additional outbuildings and storage facilities. The berth is run by British waterways and is fully residential. Facilities include 240v, mains water, postal delivery, Elsan disposal, car parking. Council tax payable - £900pa. Berth fees £2,936pa.

Sale type: Private

Viewing: By appointment.

PLEASE NOTE

In this case we are acting as Brokers only.

Whilst every care has been taken in their preparation, the correctness of these particulars is not guaranteed.

The particulars are intended only as a guide and they do not constitute a term of any contract.

A prospective buyer is strongly advised to check the particulars and where appropriate at his own expense to employ a qualified Marine Surveyor to carry out a survey and / or to have an engine trial conducted which if conducted by us shall not imply any liability for such engine on our part.

The Vendor is not selling in the course of a business.

All sales subject to contract. No guarantee is given or implied as to the condition or legal title.

No appliances or systems have been tested. All measurements stated are approximate.